

# Atlantic House



Dear Neighbour,

## Welcome to the weekly edition of the Atlantic House Construction Newsletter, keeping our neighbours updated on upcoming construction activities.

The developer, Thomas's London Day Schools and the contractor, MYCO, remain committed to working with the community as construction progresses.

As members of the Considerate Constructors Scheme, it is important that we respect the community. With this in mind, the onsite team have put in place a number of robust measures to keep noise, dust and vibration to a minimum.

Thank you again for your patience and cooperation.  
Kind regards

The Project Team

### GET IN TOUCH – *If you have any queries or concerns*

**Terry O'Neil** Senior Project Manager

T 07464322066

E [Terry.ONeil@mycoltd.co.uk](mailto:Terry.ONeil@mycoltd.co.uk)

[Feedback@thomas-s-kensington.co.uk](mailto:Feedback@thomas-s-kensington.co.uk)

W [Thomas-s Kensington \(thomas-s-kensington.co.uk\)](https://thomas-s-kensington.co.uk)

## WORKS UPDATE FOR LAST WEEK

- Crane has continued its lifting operations, the crane has zonal restrictions, meaning it can only lift within the parameters of our site, and there is no oversailing.
- M&E installation continued to progress in Atlantic House and Lytham House.
- Internal partitions continued within Atlantic House & Lytham House.
- Atlantic House and Link Building cladding sheathing board progressed.
- Painting of Façade has continues on Lytham House.
- Underfloor heating and screeding have progressed to Lytham and Atlantic House.
- Door openings formed to North Stair Tower
- Timber windows installation to both Lytham and Atlantic House is nearing completion.
- Aluminium windows to Atlantic House has progressed.
- Link Building Entrance works progressed.
- Brickwork to Atlantic House has progressed.
- Scaffold demolition will be completed on South and West Elevations of Lytham House.
- Internal works of substation completed.
- Movement, Dust, Noise & Vibration monitoring on-going daily via MYCO's monitoring stations on site, with no issues to report.

## UPCOMING WORKS FOR W/C 14/04/25

- Brickwork continuing on Atlantic House North and East elevation facades. Continuing from level 1.

- Transformer for Substation arriving 15/04/25.
- M&E installation continues to progress in Atlantic & Lytham House.
- Internal partitions continues to progress in Atlantic & Lytham House.
- Underfloor heating and screeds progressing to Atlantic House.
- Final columns for South Entrance stone support being installed.
- Continue SFS (steel frame system) to all remaining façade areas.
- Movement, Noise, Vibration and Dust monitoring on-going.
- Brickwork to Atlantic House will continue.

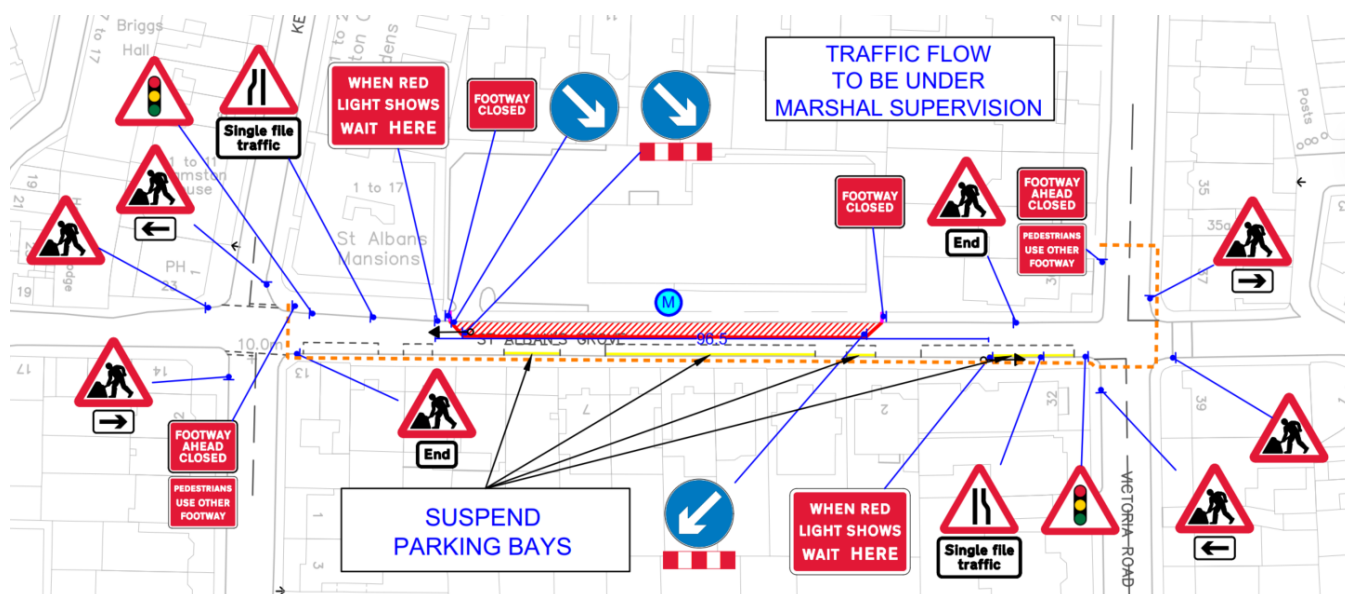
### Atlantic House Summary

- Total Programme Duration: 93 weeks.
- Week Reporting: 74.
- Expected Completion Date: August 2025.

### Atlantic House Anticipated Deliveries W/C 14/04/25

- 3 concrete wagon expected.
- 5 12m rigid lorries delivery boarding.
- 5 skip exchange expected.
- Small deliveries (Vans & Cars) expected daily.
- Transformer Delivery.

**NOTE: Tower Crane dismantle will occur 26<sup>th</sup>/27<sup>th</sup> April – Partial road closure required with suspended parking bays, same as the install last June.**



If you already do not receive this newsletter via email, and you would like to do so,  
please may you kindly email us at [feedback@thomas-s-kensington.co.uk](mailto:feedback@thomas-s-kensington.co.uk)